

RECREATION ROOM
17'5" x 29'9"
5.32 m x 9.06 m

OFFICE
12'5" x 15'7"
3.79 m x 4.74 m

ELECTRICAL ROOM
6'1" x 7'0"
1.84 m x 2.13 m

BATH
10'5" x 11'2"
3.18 m x 3.41 m

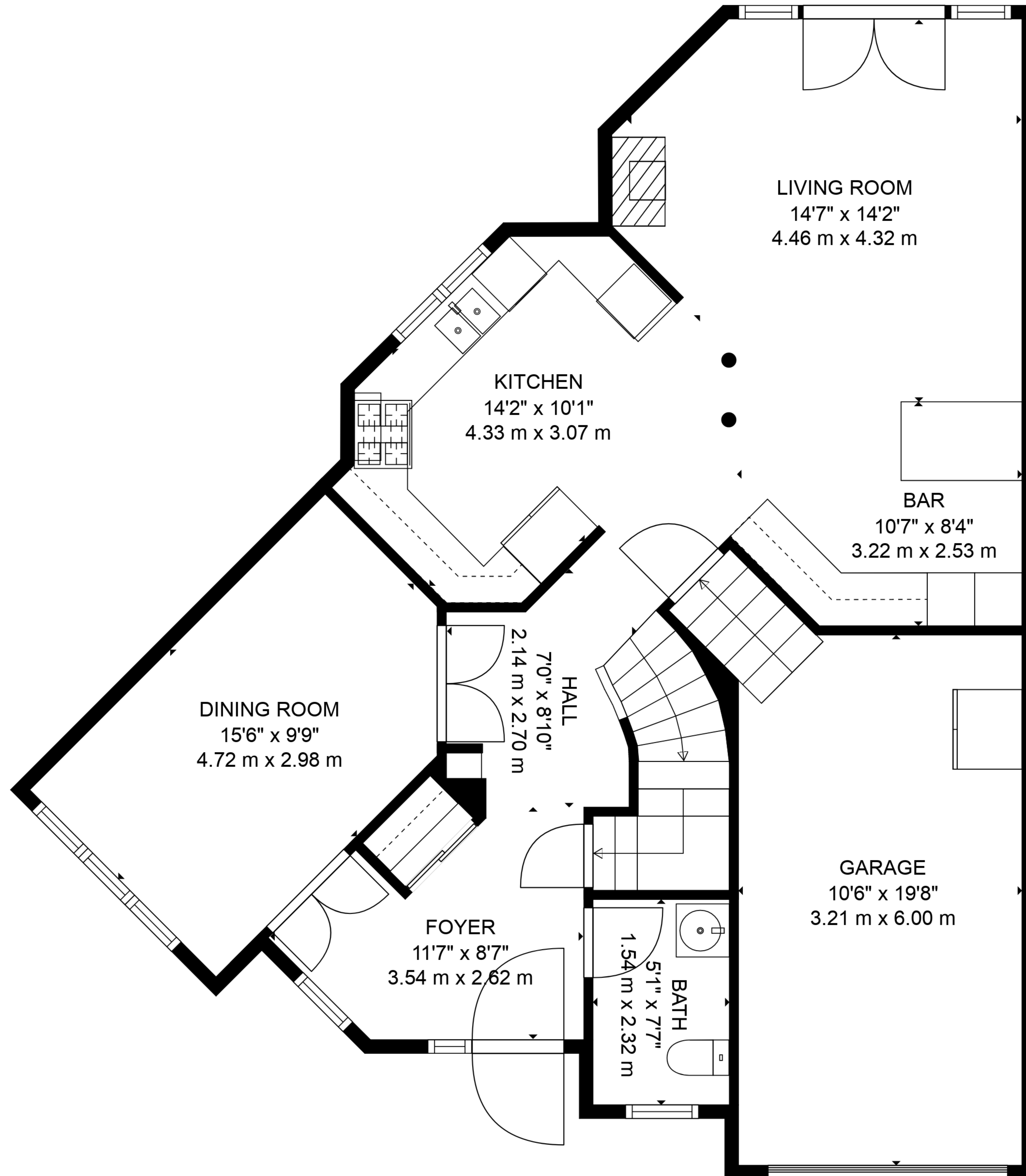
LAUNDRY
5'11" x 9'10"
1.80 m x 3.01 m

WINE CELLAR
7'1" x 4'4"
2.15 m x 1.32 m

Estimated areas

GLA FLOOR 1: 0 sq. ft, excluded 918 sq. ft
 GLA FLOOR 2: 857 sq. ft, excluded 228 sq. ft
 GLA FLOOR 3: 1088 sq. ft, excluded 0 sq. ft
 Total GLA 1945 sq. ft, total scanned area 3091 sq. ft

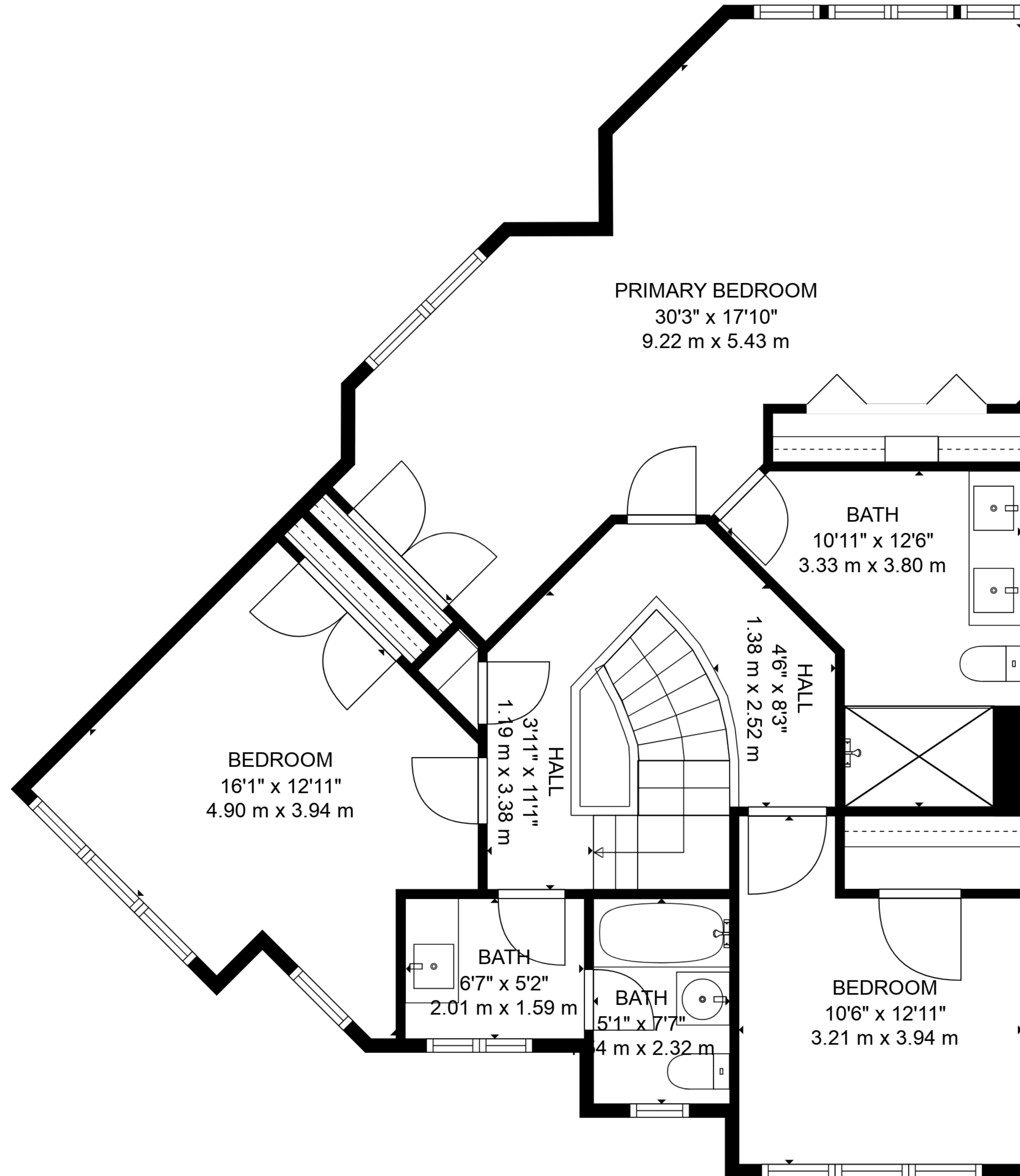




Estimated areas

GLA FLOOR 1: 0 sq. ft, excluded 918 sq. ft
 GLA FLOOR 2: 857 sq. ft, excluded 228 sq. ft
 GLA FLOOR 3: 1088 sq. ft, excluded 0 sq. ft
 Total GLA 1945 sq. ft, total scanned area 3091 sq. ft

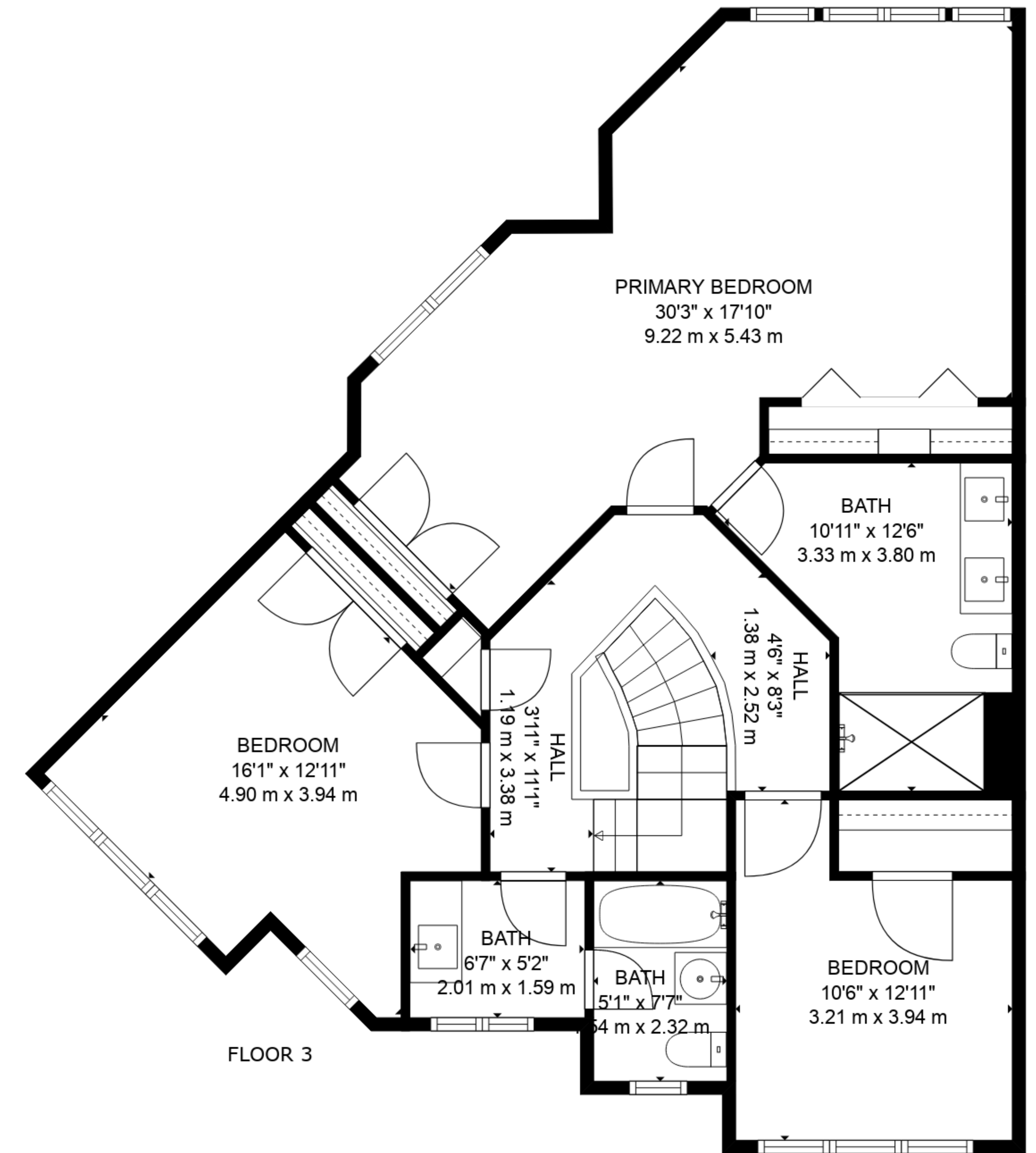
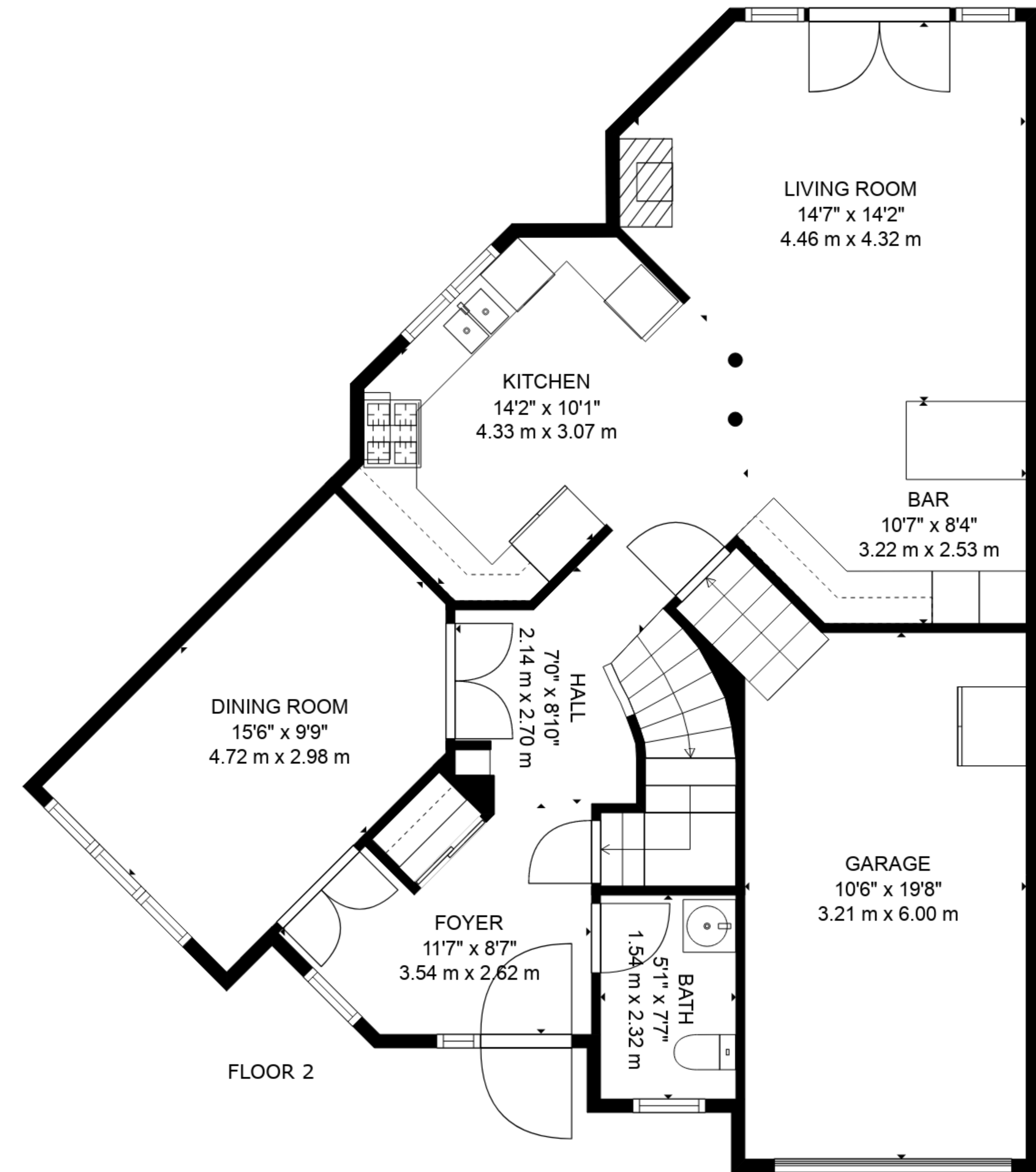
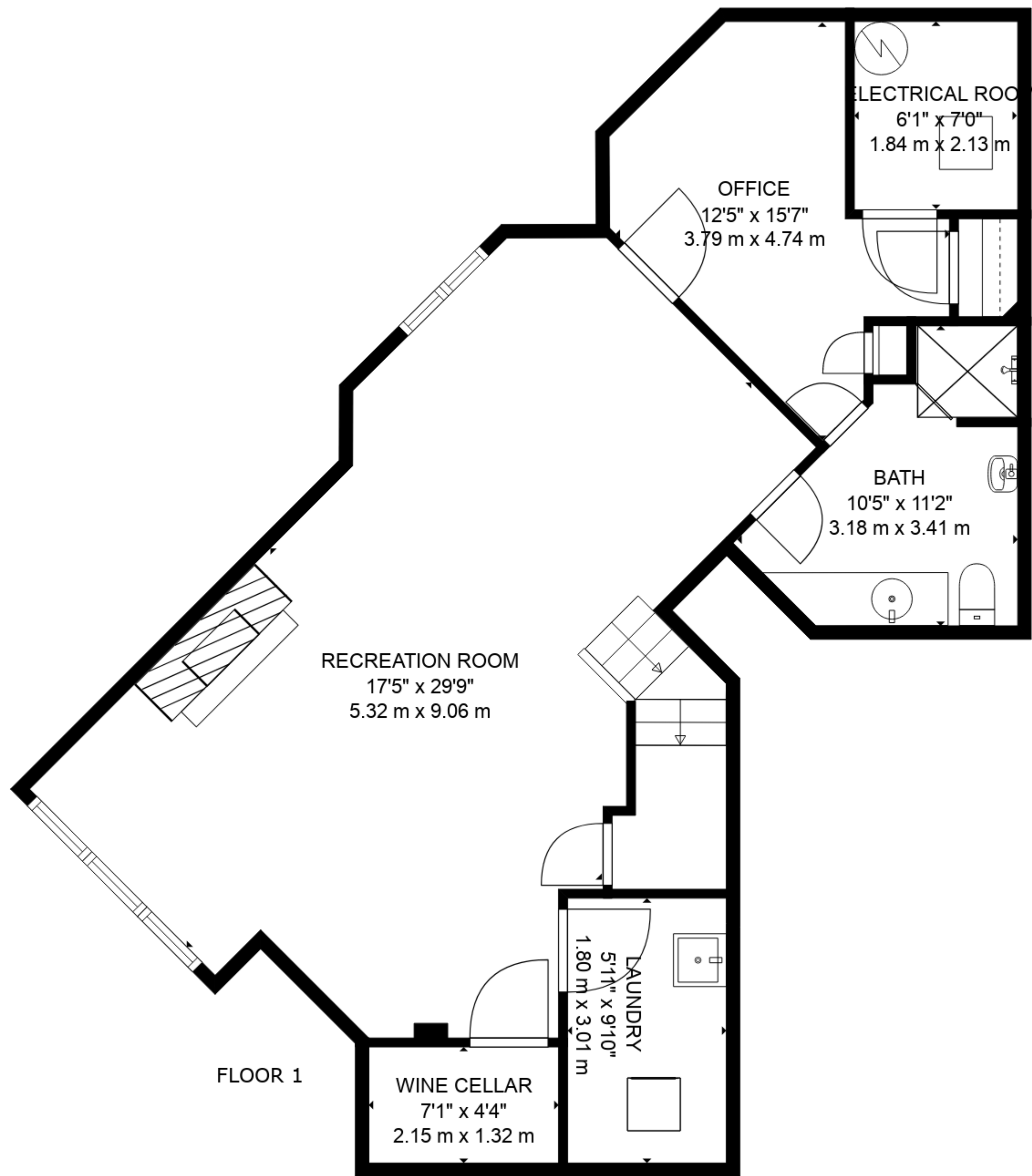




Estimated areas

GLA FLOOR 1: 0 sq. ft, excluded 918 sq. ft
 GLA FLOOR 2: 857 sq. ft, excluded 228 sq. ft
 GLA FLOOR 3: 1088 sq. ft, excluded 0 sq. ft
 Total GLA 1945 sq. ft, total scanned area 3091 sq. ft





Estimated areas

GLA FLOOR 1: 0 sq. ft, excluded 918 sq. ft
 GLA FLOOR 2: 857 sq. ft, excluded 228 sq. ft
 GLA FLOOR 3: 1088 sq. ft, excluded 0 sq. ft
 Total GLA 1945 sq. ft, total scanned area 3091 sq. ft

